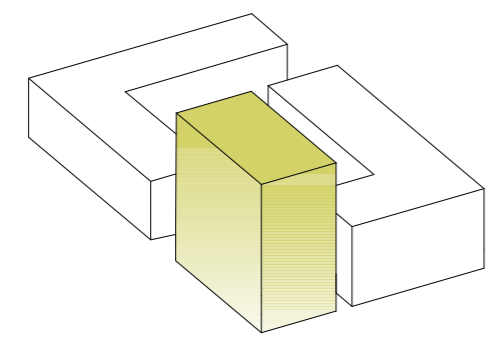
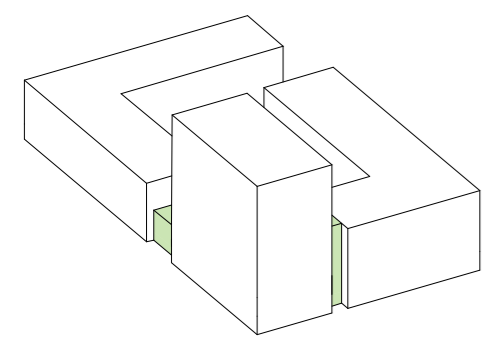


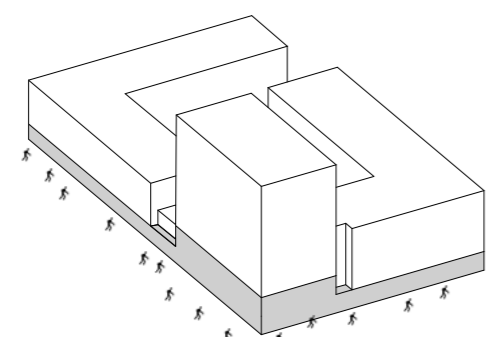
Ausgangslage



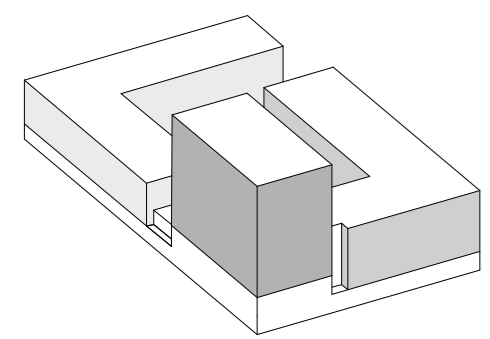
Körnig von Erfurt vs. neues westliches Stadttor



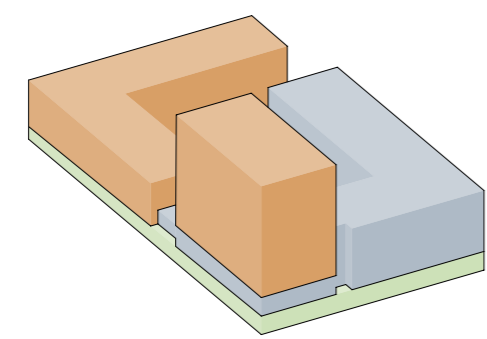
Vertikales Grün - Entree Ega Park am Gothaer Platz



Verbindender Sockel mit öffentlichen Einrichtungen



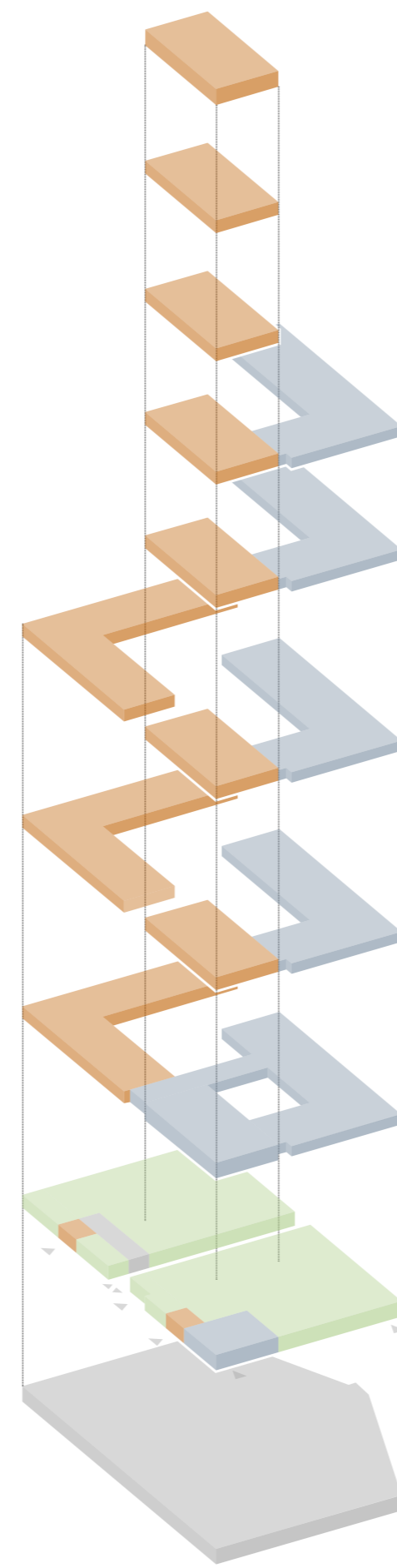
Differenzierte Fassaden bei gleicher Materialität/ Proportion



Funktionsaufteilung

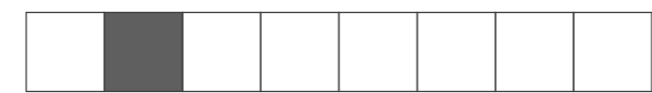
- Parkierung
- Hotel
- Lebensmittelmarkt
- Büro

Legende



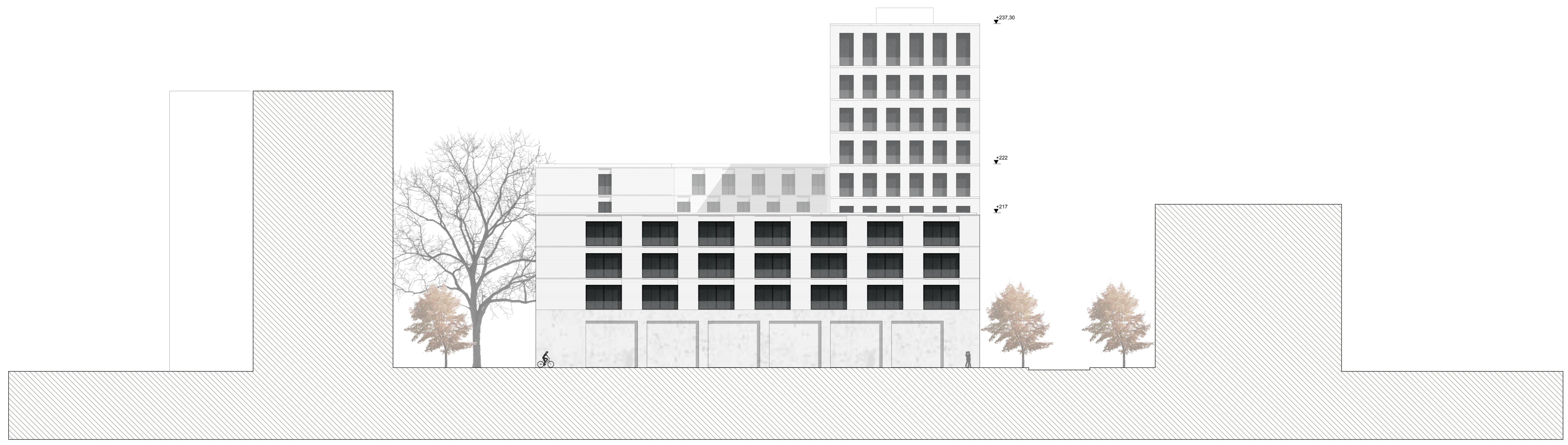
Funktionsaufteilung Sprengisometrie

Lageplan M 1:500

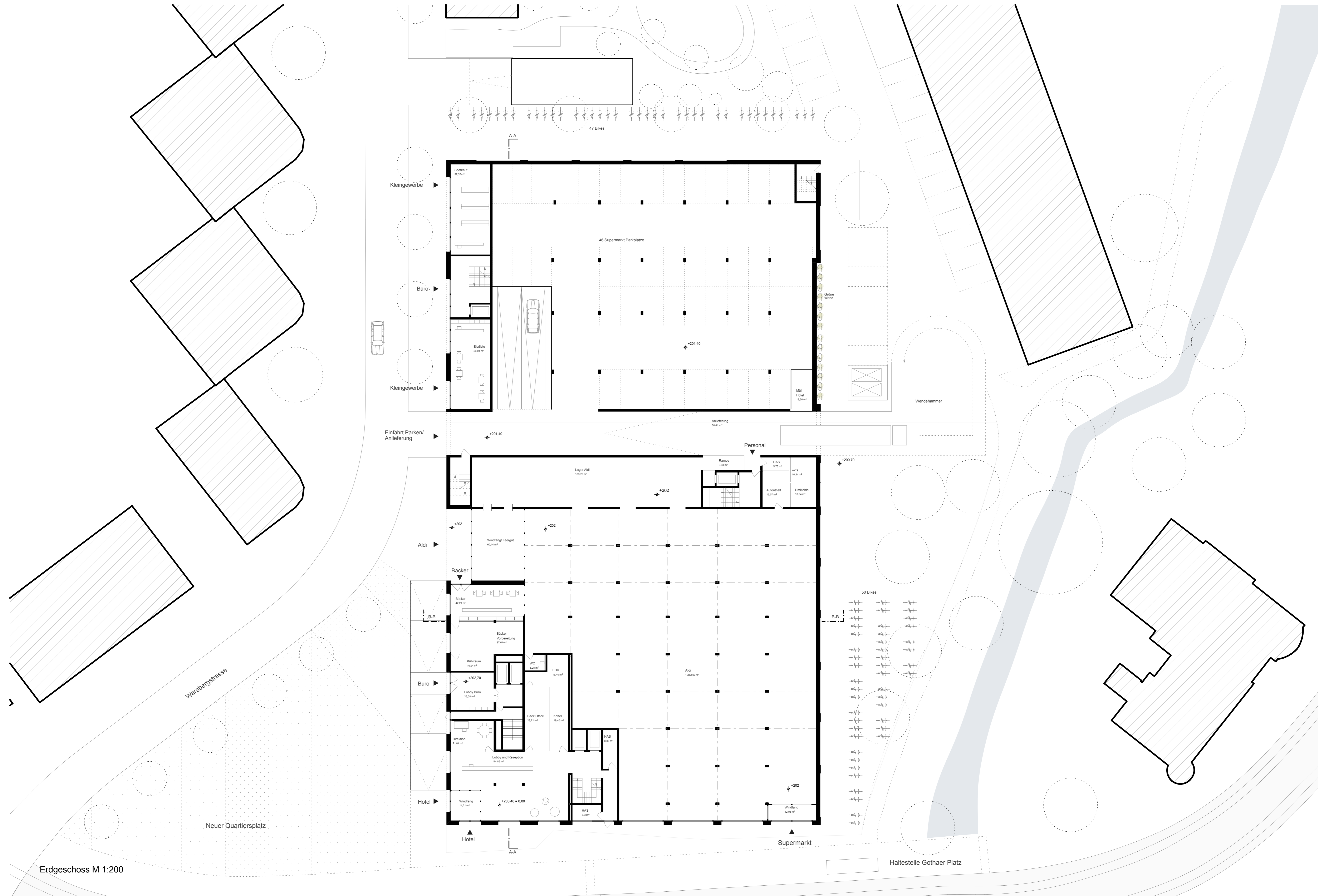


Nordansicht M 1:200

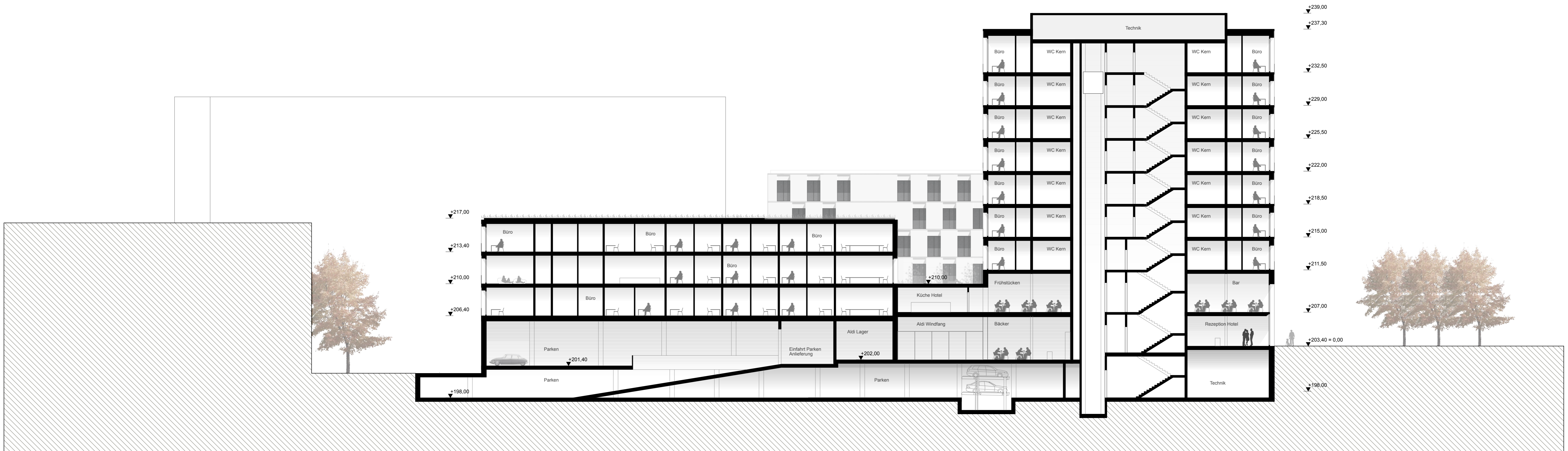
Kiosk      Büro Lobby      Eisdiel      Einfahrt Parken/Anlieferung      Haupteingang Aldi      Bäcker      Büro Tower Lobby      Rezeption Hotel      Haltestelle Gothaer Platz



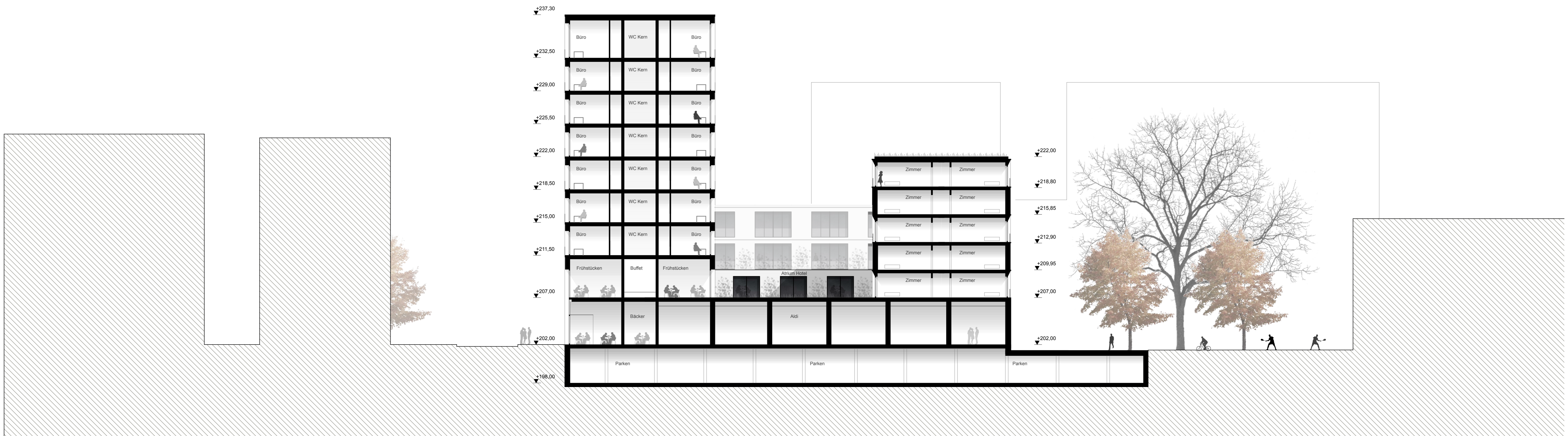
Ostansicht M 1:200



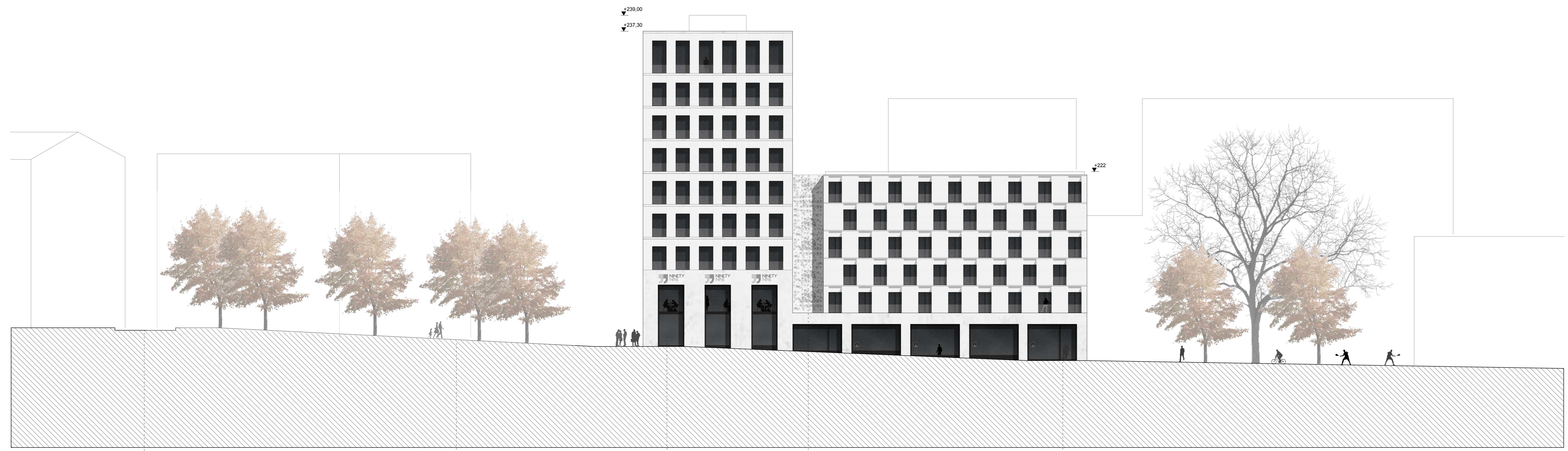
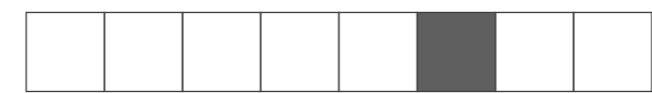
Erdgeschoss M 1:200



Schnitt A-A M 1:200



Schnitt B-B M 1:200



Westansicht M 1:200

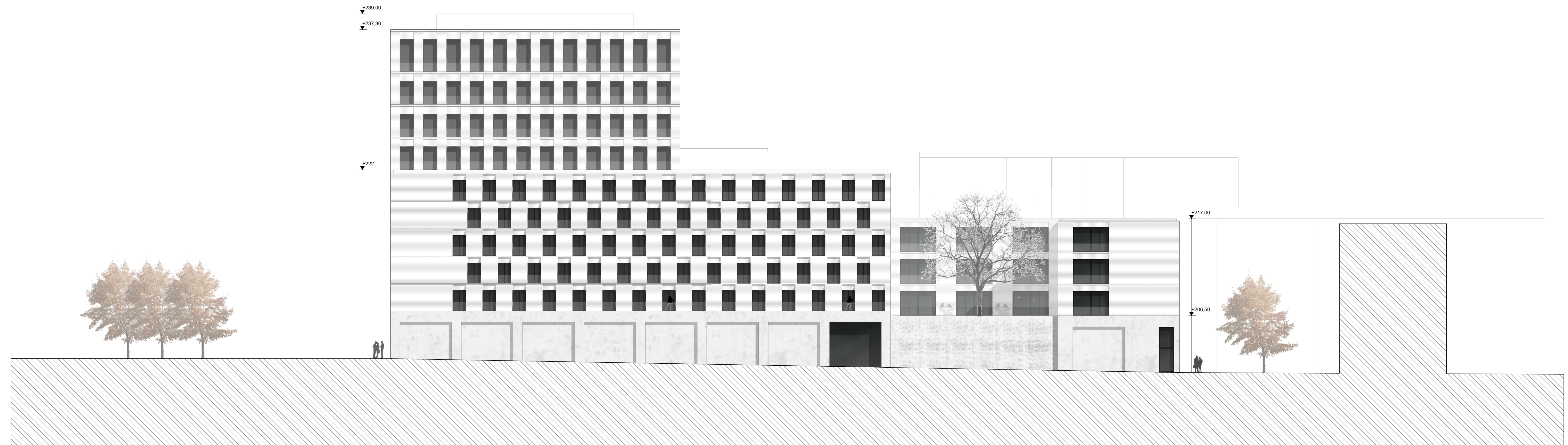
Warsbergstrasse

Neuer Quartiersplatz

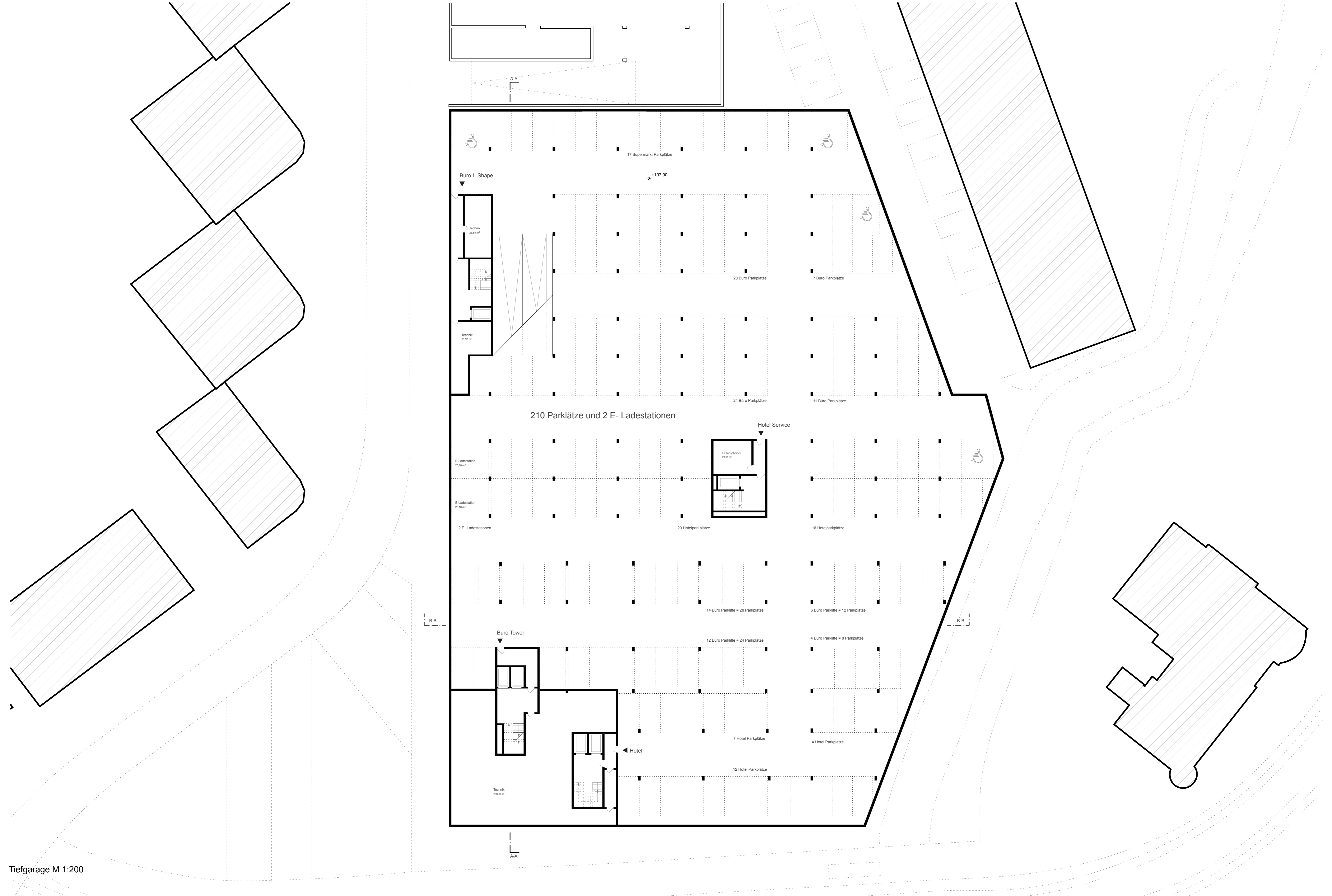
Eingang Hotel

Grüne vertikale Wand

Eingang Alti Gothaer Platz



Südansicht M 1:200

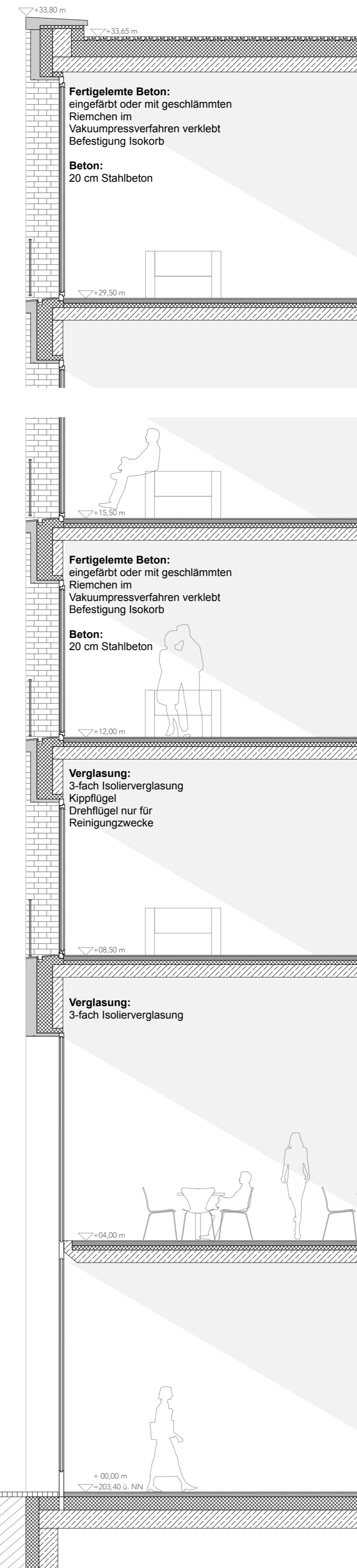




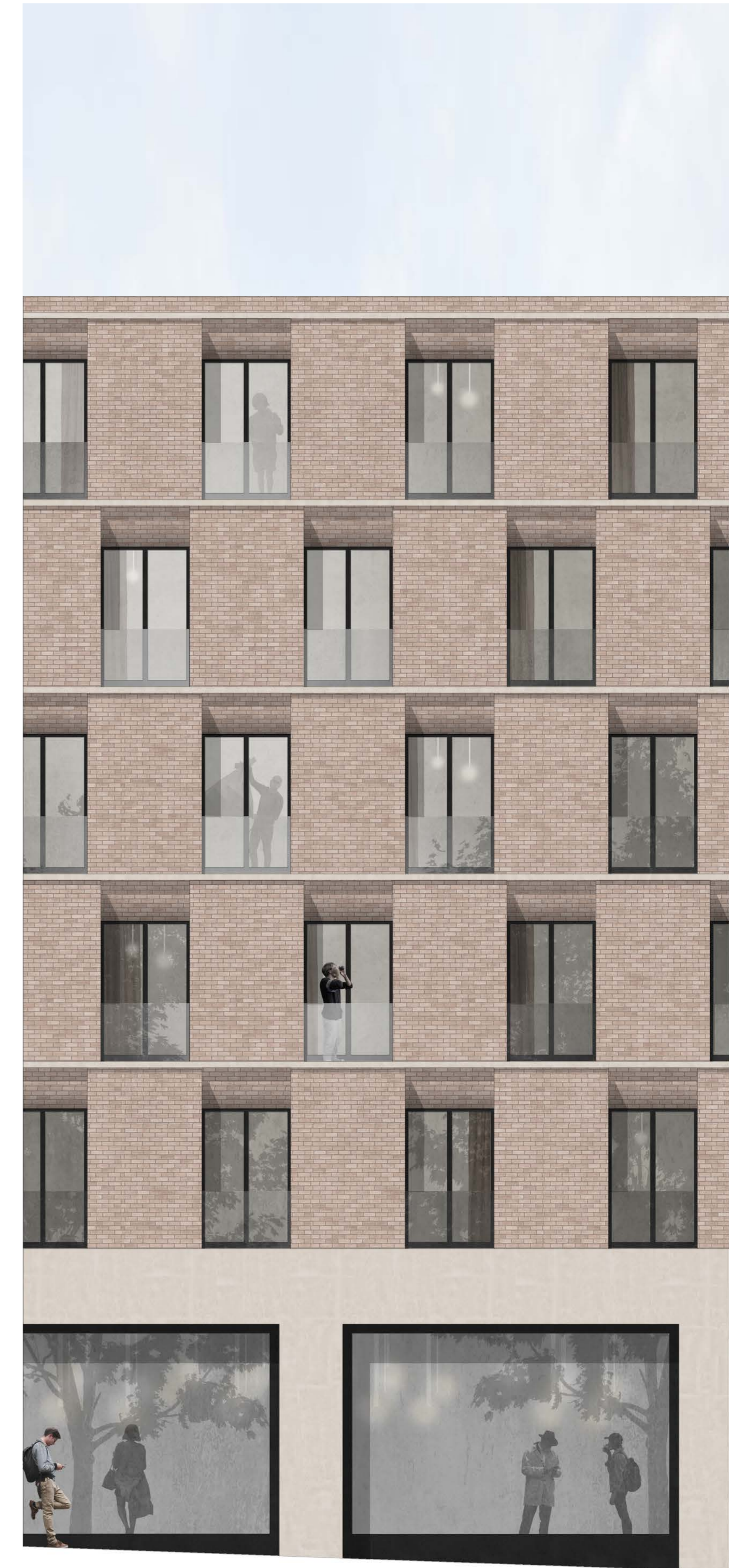
Fassadenansicht Nord Büro M 1:50



Fassadenansicht West Büro M 1:50



Fassadenschnitt West Büro M 1:50



Fassadenansicht West Hotel M 1:50