



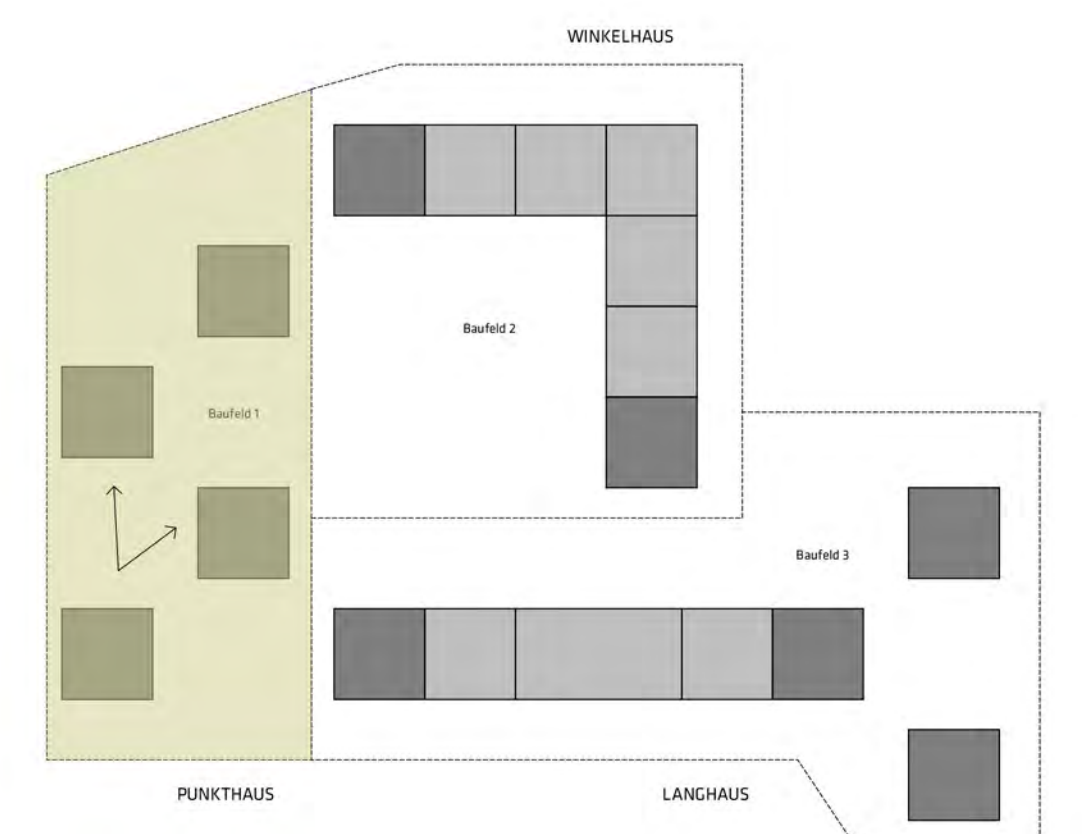
singerviertel

Wohnen Am Herrenberg

Baufeld 1 Punkthaus

4 Module 15m x 15m

40 Wohneinheiten

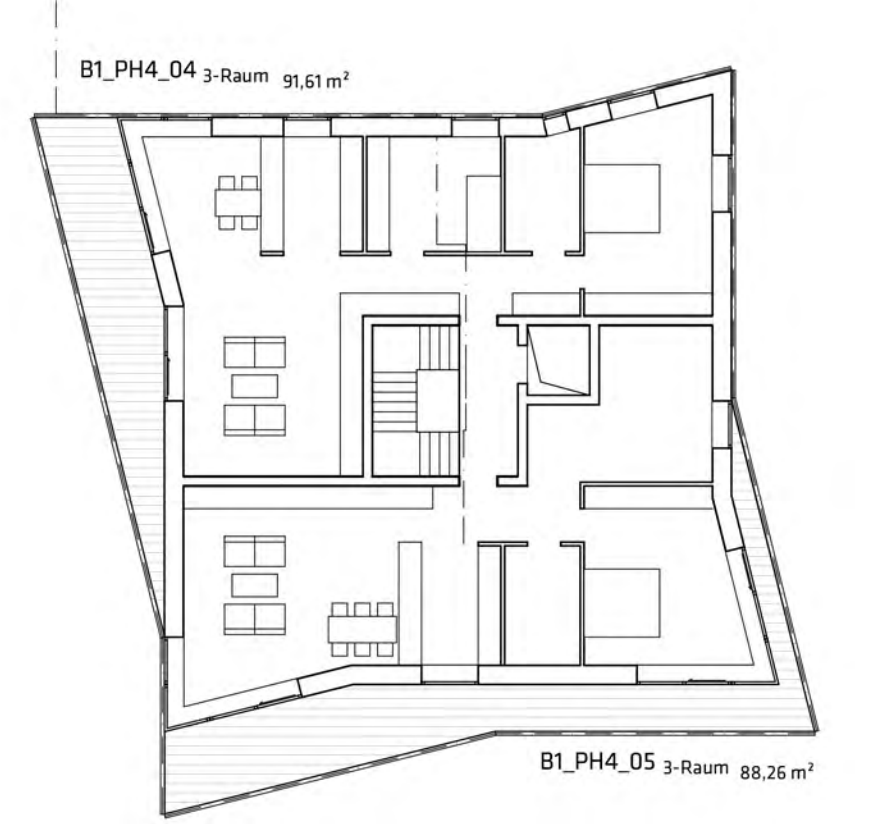


baufeld 1 1:1250

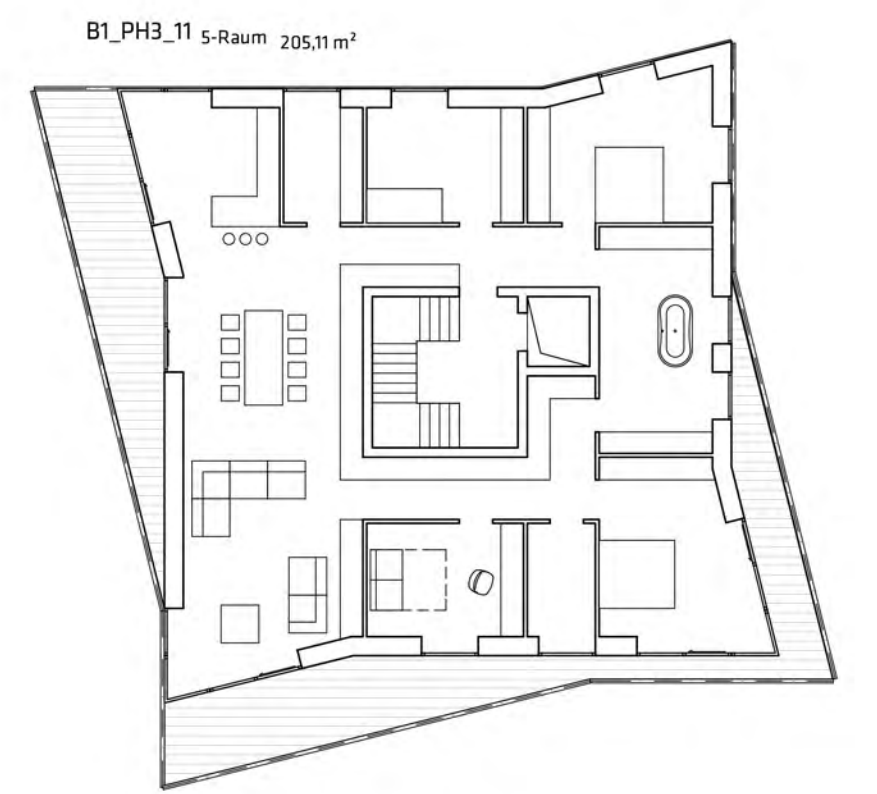
Perspektive Baufeld 1



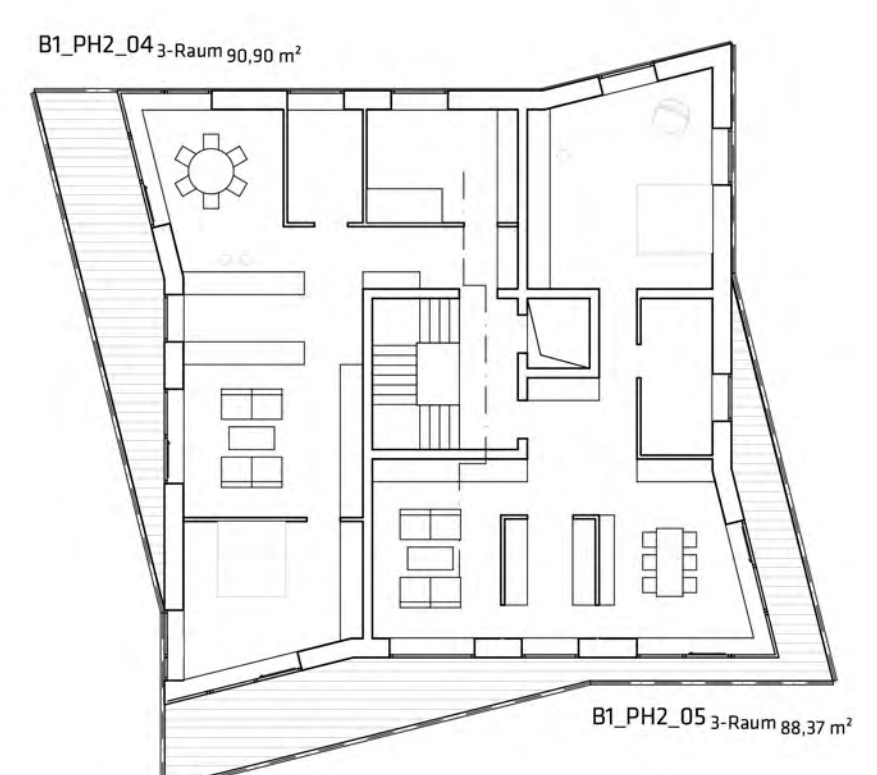
Lageplan 1:500



Grundriss 1.OG (Regel) 1:200



5.OG Punkthaus 3 1:200



Grundriss 1.OG (Regel) 1:200



Schnitt BF 1 1:200



Ansicht Westen Punkthäuser 1:200